

MOTOR SPARES PARTS LISTS

PART NO.	DESCRIPTION	PART NO.	DESCRIPTION
30.26006	Circlip	60.00006	Muffler
30.28014	Key (2)	60.00010	Bearing
30.33074	Washer	60.00012	Gudgeon Pin
30.33704	Washer	60.00020	Car. Spacer Gasket
30.34012	Bearing (2)	60.00022	Shield
30.49005	'O' Ring	60.00024	Screw (5)
30.50015	Bearing Spacer Seal	60.00025	Carb. Gasket
30.55035	Plug	60.00047	Gasket
30.72014	Washer (2)	60.00054	Screw
33.00036	Fuel Inlet Nipple	60.00056	Screw
33.00202	Screw	60.00057	Spring
33.00209	Screw	60.00063	Screw (4)
38.33073	Washer (8)	60.00064	Screw (8)
38.33076	Washer (4)	60.00072	Accelerator Trigger
39.33100	Washer/Nut (2)	60.00081	Gasket - Oil Filter
40.00059	Pin	60.00084	Cover
40.00077	Button	60.00085	Screw (2)
40.00078	Spring	60.00120	Starter Assembly
40.00374	Switch On-Off	60.00121	Starter Housing
40.00434	Washer	60.00123	Recoil Starter Cord
40.00438	Plate On-Off	60.00124	Recoil Starter Stopper
40.00443	Screw Special	60.01021	Recoil Starter Pulley
50.00053	Lever	60.00134	Recoil Starter Bush-Plain
50.00058	Screw (4)	60.00135	Washer
50.00136	Screw	60.00142	Nut
50.00343	Washer	60.00160	Clutch Spring (3)
50.00359	Spring	60.00164	Clutch Spacer
50.00360	Spring	60.00167	Clutch Securing Nut
50.00361	Washer	60.00187	Grommet
51.00433	Pin	60.00213	Washer
52.00228	Rubber Mount	60.00258	Pin Bush
52.00941	Valve	60.00312	Plate
54.00303	Screw (2)	60.00313	Pin (2)
54.00563	Mount Protector	60.00315	Washer (5)
60.00002	Cylinder Head Gasket		

12

MOTOR SPARES PARTS LISTS

PART NO.	DESCRIPTION	PART NO.	DESCRIPTION
60.00330	Gasket Set	72.01201	Crankcase Assembly
60.00331	Manifold Gasket	72.01313	Oil Seal
60.00624	Screw (2)	72.01354	Crankcase
6000829	Washer	72.01356	Pipe
60.00933	Clutch Plate	72.01357	Crankcase
60.00934	Clutch Assembly	81.00187	Grommet
61.00188	Spring	82.00131	Plate
61.00302	Grommet	82.00281	'O' Ring
61.00303	Screw (2)	82.00286	Washer (2)
61.00358	Trigger	82.00925	Adaptor
61.00364	Pin	82.00929	Lead
61.00953	Handle	83.00334	Knob
61.00955	Guide	83.00349	Air Filter Cover Complete
61.00963	Spring	150.00001	Adaptor
61.00975	Cap	160.00059	Oil Pump
61.01033	Gas Cap Assembly	160.00061	Cap
72.00001	Cylinder Assembly 49mm	172.00070	Shaft & Lever
72.00007	Cylinder 49mm	181.00118	Oil Tank Cap
72.00015	Piston Ring	181.00354	Pipe
72.00521	Piston Assembly 49mm	350.00047	Line
72.00952	Handle Base	350.00131	Foam Gasket
72.00953	Shaft	350.00143	Carburettor Assembly
72.00956	Bracket	350.00144	Throttle Lever
72.00960	Screw	350.00145	Cover
92.00961	Throttle Spring	350.00146	Cover
72.00965	Spacer (2)	350.00147	Shaft Assembly-Throttle
72.00990	Plate	350.00148	Shutter
72.00992	Lead	350.00149	Clip
72.01019HD	Throttle Handle Assy Heavy Duty	350.00150	Shaft Assembly & Choke
72.01045	Plug Cap	350.00151	Choke Valve
72.01073	Top Cover	350.00153	Valve
72.01088	Flywheel Electronic	350.00155	Ball
72.01097	C.D. Unit	350.00160	Screw
72.01150	Crankshaft	350.00161	Screw
72.01198	Clip (2)	350.00162	Screw (4)
		350.00164	Spring

13

MOTOR SPARES PARTS LISTS

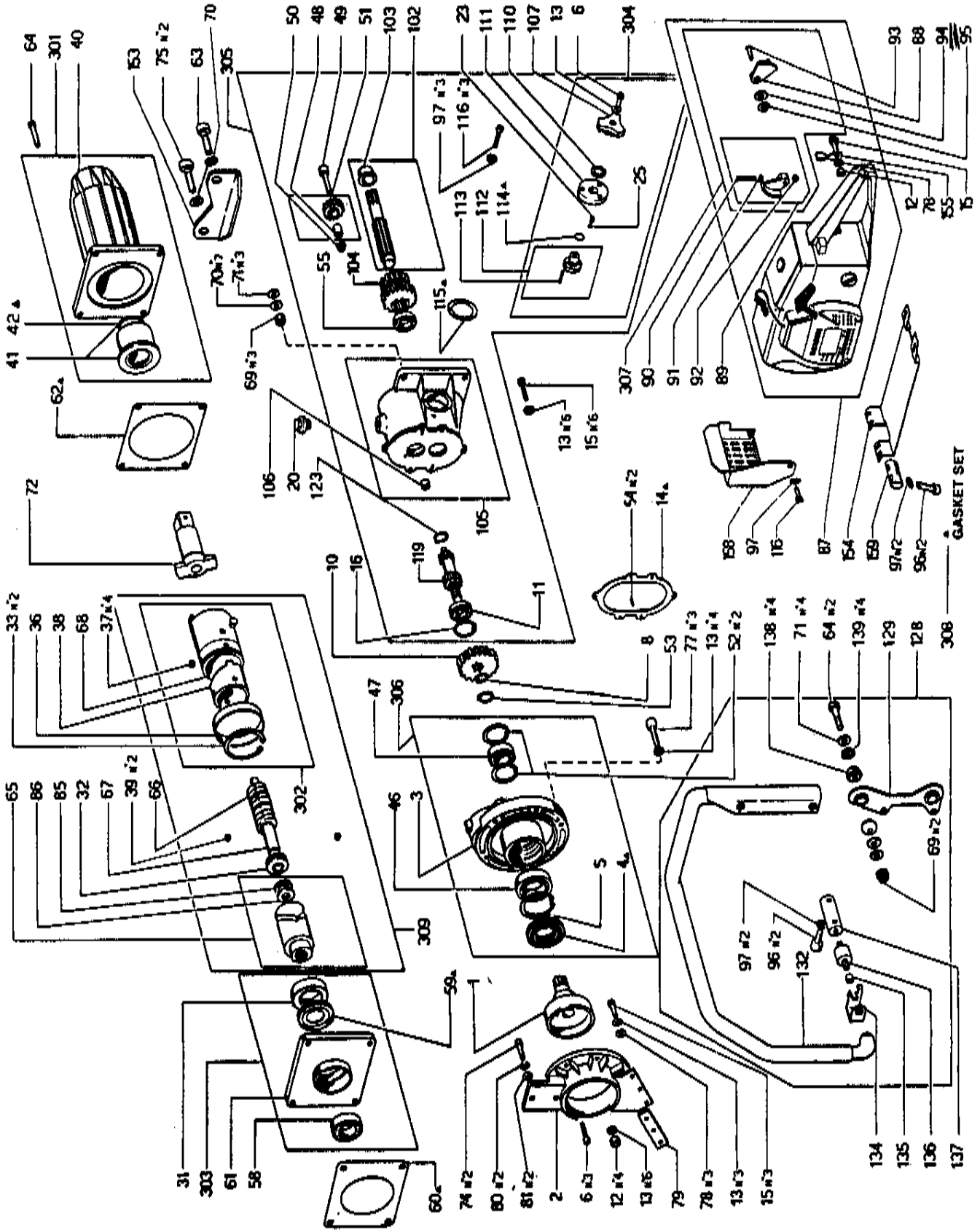
PART NO.	DESCRIPTION	PART NO.	DESCRIPTION
350.00165	Spring	350.00188	Air Filter Complete
350.00166	Needle - Idle	355.00229	Screw
350.00167	Needle - HI Speed	945.00083	Line
350.00169	Pin	945.00084	Shaft
350.00171	Spring	945.00207	Fuel Filter Assembly
350.00172	Walbro Carb. Gasket Set	999.00397	Switch Nut
350.00173	Walbro Carb. Repair Kit	999.00601	Flywheel Ratchet Assy.
350.00179	Oil Filter		

PART NUMBER CHANGES

OLD	DESCRIPTION	NEW	OLD	DESCRIPTION	NEW
10.00023	Compression Tool	10.42900	60.00061	Washer (8)	28.33073
10.00052	Puller	10.00714	60.00076	Ring	30.26004
10.00055	Pressure Gauge	10.43900	60.00082	Oil Filter	350.00179
40.00019	Plug	30.55035	60.00133	Recoil Starter Pulley	60.01021
51.00067	Washer/Nut	39.33100	60.00139	Spring (2)	Flywheel Ratchet Assembly
54.01096	Air Filter Complete	350.00188	60.00140	Dog (2)	
60.00004	Washer (4)	38.33076	60.00141	Circlip (2)	
60.00011	Key (2)	30.28014	350.00156	Gasket	Walbro Carb. Gasket Set
60.00016	Bearing (2)	30.34012	350.00157	Gasket	
60.00017	Bearing Spacer Seal(2)	30.50015	350.00158	Diaphragm	
60.00023	Washer (2)	30.72014	350.00159	Diaphragm Assembly	
60.00033	'O' Ring	30.49005	945.00083	Circlip	30.26006
60.00052	Shaft & Lever	172.00070			

MASTER 35

IMPACT UNIT & GEAR BOX



Orig. No.	Description	Part #
128	Anti Vibration Handle	03512
301	Nose Casing	0353
302	Hammer	03530
303	Ring Flange	03530
304	Gear Selector	03530
305	Gear Box	03530
306	Clutch Flange	03530
307	Torque Control	03530
308	Impact	03530
311	Impact Unit Complete	03531

ARTEC
INTERNATIONAL LTD
01-02-1984

15

IMPACT & GEARBOX PARTS LIST

DRG. REF.	DESCRIPTION	PART NO	DRG. REF.	DESCRIPTION	PART NO
1	Clutch Ring	035501	77	Screw (3)	135577
2	Flange Support	035502	78	Washer (3)	135578
3	Clutch Support Flange	035503	79	Spacer	035579
4	Oil Seal	135504	80	Washer Spring (2)	135580
5	Circlip	135505	81	Washer (2)	135581
6	Screw (3)	135506	85	Guide Bush	035585
8	Circlip	135508	86	Stop Bush	035586
10	Gear	035510	87	Motor Complete	035587
11	Bearing	102020	88	External Torque Control Lever	035588
12	Nut Shakeproof (4)	135512	89	Internal Quadrant Complete	035589
13	Washer Shakeproof (13)	135513	90	Screw	135590
14	Gasket	035514	91	Nut	135591
15	Screw (3)	135515	92	Acorn Nut	135592
16	Circlip	135516	93	Screw	135593
20	Oil Filler Plug	135520	94	Washer	135594
23	Spring	035523	95	Washer	035595
25	Steel Ball	104051	96	Screw (2)	135596
31	Bearing	135531	97	Washer Shakeproof (2)	135597
32	Bearing	135532	102	Bearing Shaft	035102
33	Seeger Ring (2)	135533	103	Bush	035103
36	Steel Ring	035536	104	Gear Cluster	035104
37	Steel Plug (4)	035537	105	Gear Box	035105
38	Cam Plate	035538	106	Bronze Bearing	035106
39	Steel Ball (2)	135539	107	Gear Change Knob	035107
41	Nose Bush only	033005	110	Washer	135110
42	'O' Ring	135542	111	Gear Flange	035111
46	Bearing	135546	112	Gear Selector	035112
47	Bearing	102016	113	Selector Pin	035113
48	Bronze Bearing	035548	114	'O' Ring	135114
49	Planet Pivot	035549	115	Gasket	035115
50	Planet Spacer	035550	116	Screw (3)	135116
51	Planet Gear	035551	119	Selector Shaft	035119
52	Circlip (2)	135552	123	Wave Washer	135123
53	Circlip	135553	128	Complete Anti Vibration Handle	035128
54	Dowel (2)	035554	129	Bracket	035129
55	Bearing	103020	132	Anti Vibration Carrying Handle	035132
58	Bearing	135558	134	Bracket	7200886
59	Oil Seal	135559	135	Bush	7200887
60	Gasket	035560	136	Bush Anti Vibration	60.00232 -
61	Ring Flange	035561	137	Support	035137
62	Gasket	035562	138	Rubber Mount (4)	5400227
63	Screw (2)	135563	153	Foot Rest	135153
65	Catch	035565	154	Fuel Tank Wear Plate	135154
66	Spring	035566	155	Torque Stop Bar	135155
67	Central Shaft	035567	156	Screw (2)	135156
68	Hammer	035568	157	Washer Plain	135157
70	Washer Shakeproof (9)	135570			
72	Anvil	035572			
74	Screw (2)	135574			
75	Screw (2)	135575			

16

IMPACT & GEARBOX PARTS LIST

PARTS			COMPLETE ASSEMBLIES		
DRG. REF.	DESCRIPTION	PART NO	DRG. REF.	DESCRIPTION	PART NO
158	Exhaust Guard	135158	301	Nose Casing	035301
159	Wear Plate Support	035159	302	Hammer	035302
160	Locking Ring	035160	303	Ring Flange	035303
161	Screw (2)	135161	304	Gear Selector	035304
162	Mount Protector (4)	135162	305	Gear Box	035305
163	Washer (7)	135163	306	Clutch Flange	035306
164	Lock Nut	135164	307	Torque Control	035307
308	Gasket Set	035308	309	Impact	035309
			311	Impact Unit Complete	038311

PART NUMBER CHANGES

OLD NUMBER	DESCRIPTION	NEW NUMBER
035136	Anti Vib. Bush	60.00232
135158	Exhaust Guard	99.00050
035159	Wear Plate Support	035137

Parts Drawing Ref. 64, 139, 71 and 69 replaced by 161 to 164 respectively and Locking Ring 160 added from March 1997 Serial No. 97841

17

24 – TOOLS AND ACCESSORIES

1. TOOLKIT

The Toolkit contains the following all of which should be kept in a sound condition.

Toolkit in Bag Complete	TK1
Allen Key 4mm	TK2 For 5mm Cap Screws
Allen Key 5mm	TK3 For 6mm Cap Screws
Allen Key 6mm	TK4 For 8mm Cap Screws
Double Open Ended Spanner 13mm x 10mm	TK5 For Clutch Nut And M10 Hex Screw Respectively.
Spanner 17mm	TK6
Spark Plug Spanner	TK7
Screwdriver	TK8 Carb. Adjustment
Fuel Funnel	TK9
Recoil Starter Cord	60.00123

2. WORKSHOP TOOLS

To effect repairs quickly and efficiently the following special Workshop Tools should be available and used :-

Pressure Gauge	10.43900 Check Carburettor for leaks.
Puller	10.00714 Remove Flywheel. Use with Piston Stop Tool.
Piston Stop Tool	10.00022 Remove Magneto Flywheel and Clutch Ring
Compression Tool	10.42900 Renew Piston Rings in Fuel Tank.
Fuel Tank Test Cap	WT1 Test Pressure
Ring Spanner Thin	WT2

3. ACCESSORIES

QUICK RELEASE SAFETY AUGERING ATTACHMENT
 AUGER BITS for HARD and SOFT TIMBERS 10 to 22mm dia.
 METAL CARRYING BOX
 MASTER IMPACT SOCKETS
 SQUARE BI-SQUARE, RECTANGULAR, HEXAGON – STANDARD AND DEEP VERSIONS to fit every Railway fastener used throughout the World
 EXTENSIONS and UNIVERSAL JOINTS
 STEEL PINS, RUBBER RETAINING RINGS and MASTER CLIPS.
 TWO –STROKE OIL and MOLY. GREASE

4. ORDERING SPARE PARTS and ACCESSORIES

To obtain the correct Spare Parts quickly, simply order by Part Number and/or Drawing Reference and Description.

Sample Order

5 off – Anvils Ref. 72 035572

5 off – Air Filter Covers 83.00349

10 off – Hardwood Auger Bits 16mm

For further advice, or, to order
**MACHINES, SPARES and
 ACCESSORIES**

CONTACT :-